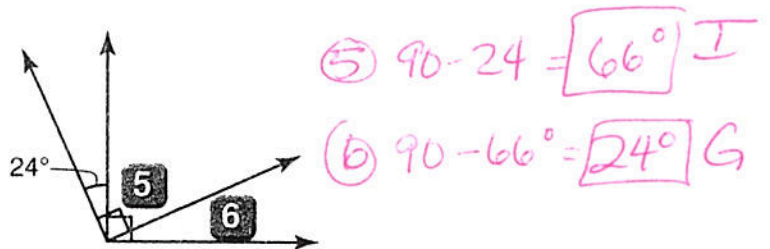
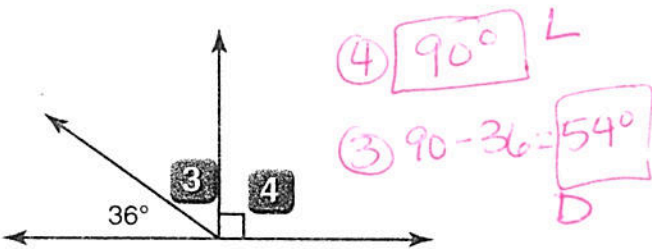
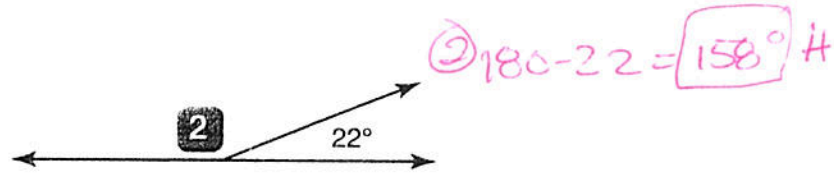
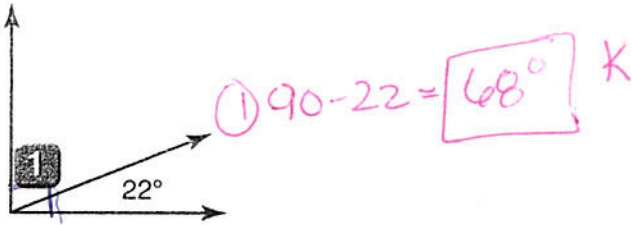


Angle Pairs

Find each angle measure.



- 7 $\angle A$ is complementary to $\angle B$. $m\angle A = 15^\circ$. What is $m\angle B$? $90^\circ - 15^\circ = 75^\circ$ E
- 8 $\angle C$ and $\angle D$ are vertical angles. $m\angle C = 42^\circ$. What is $m\angle D$? 42° they are equal A
- 9 $\angle E$ is supplementary to $\angle F$. $m\angle F = 162^\circ$. What is $m\angle E$? $180^\circ - 162^\circ = 18^\circ$ C
- 10 $\angle G$ and $\angle H$ are complementary. $m\angle G = 18^\circ$. What is $m\angle H$? $90^\circ - 18^\circ = 72^\circ$ F
- 11 $\angle I$ and $\angle J$ are supplementary. $m\angle I = 18^\circ$. What is $m\angle J$? $180^\circ - 18^\circ = 162^\circ$ J
- 12 $\angle K$ and $\angle L$ are complementary. $m\angle L = 42^\circ$. What is $m\angle K$? $90^\circ - 42^\circ = 48^\circ$ B

Answer Box

A (8) 42°	B (12) 48°	C (9) 18°	D (3) 54°	E (7) 75°	F (10) 72°
G (6) 24°	H (2) 158°	I (5) 66°	J (11) 162°	K (1) 68°	L (4) 90°

Objective: Use vertical, adjacent, complementary, and supplementary angle pairs to solve problems.