

They're all 180°

Example

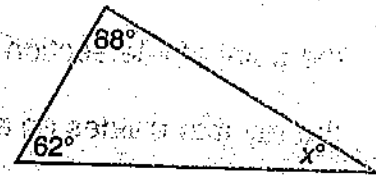
The measures of the angles of every triangle have a sum of 180°. Find the measure of the missing angle.

$$62 + 88 + x = 180$$

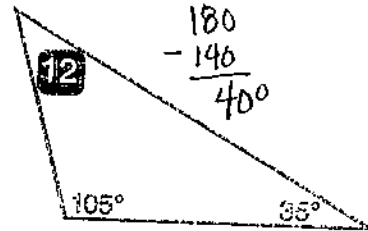
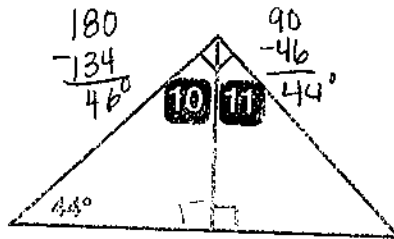
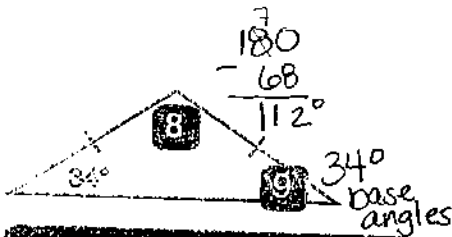
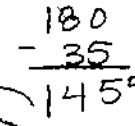
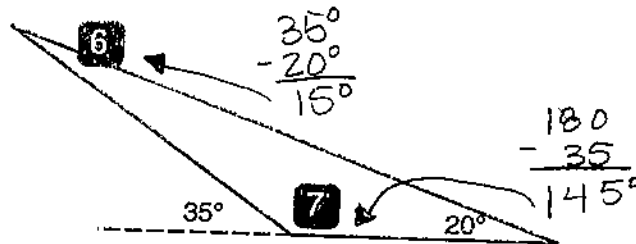
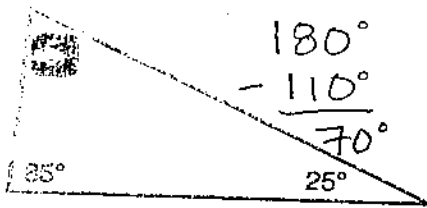
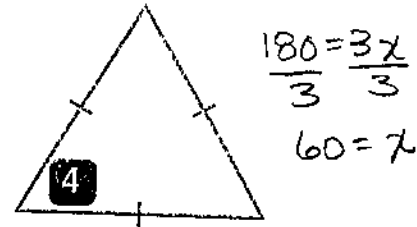
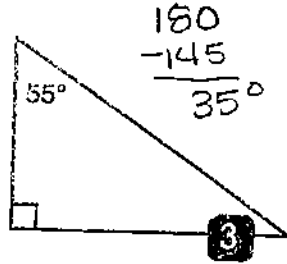
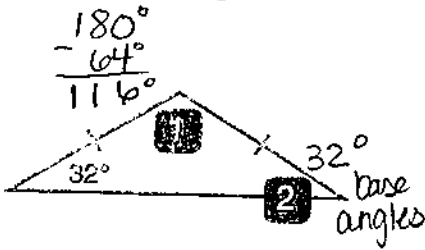
$$150 + x = 180$$

$$x = 30$$

The missing angle measure is 30°.



Find each angle measure.



Answer Box

A 10 46°	B 7 145°	C 6 15°	D 2 32°	E 11 44°	F 5 70°
G 1 116°	H 4 60°	I 8 112°	J 12 40°	K 9 34°	L 3 35°

